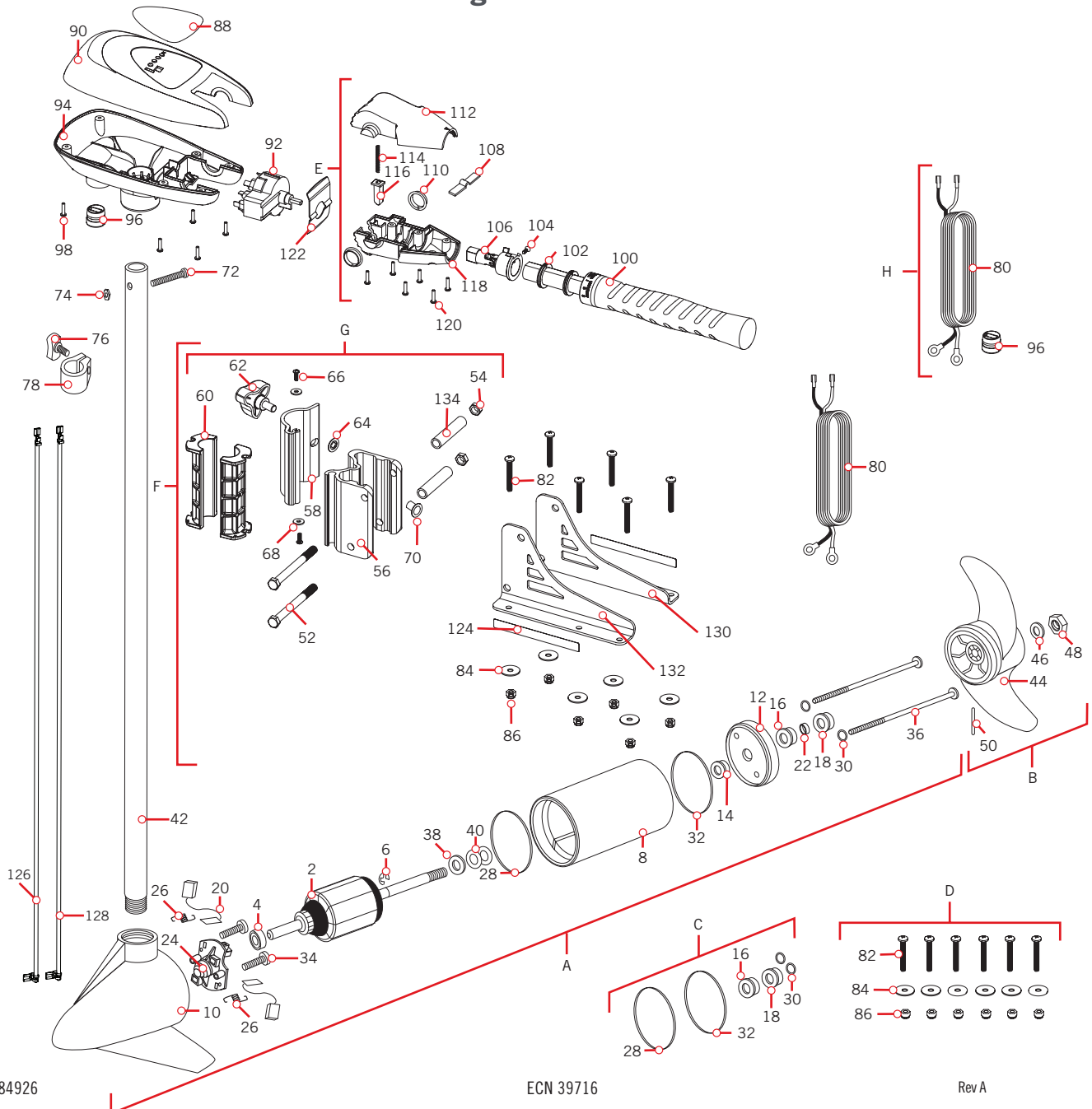


# PARTS DIAGRAM & PARTS LIST

PONTOON HAND CONTROL - 55 LBS THRUST - 12 VOLT - 50 AMPS - 52" SHAFT

## PONTOON HAND CONTROL 55

### Pontoon Hand Control 55 Parts Diagram



Part #2184926

ECN 39716

Rev A

02/19

# PARTS DIAGRAM & PARTS LIST

## ▶ Pontoon Hand Control 55 Parts List

Assembly	Part #	Description	Quantity
A	2097077	MOTOR ASSEMBLY 12V F/W 3.625 5SPCO *55LB*	1
B	1378131	PROPELLER KIT 3.625 *55LB*	1
C	2888460	SEAL & O-RING KIT 3.625 *55LB*	1
D	2994838	BAG ASSEMBLY - BOLTS NUTS WASHERS	1
E	2990467	HANDLE ASM, 5-3 SPD FW/SW	1
F	2991645	PONTOON BRACKET	1
G	2991829	HINGE DOOR KNOB ASSEMBLY	1
H	2992527	LEADWIRE ASSEMBLY EDGE /HC	1
Item	Part #	Description	Quantity
2	2-100-117	ARM ASSEMBLY 12V 3.625 55#	1
4	140-010	BALL BEARING	1
6	788-015	RETAINING RING	1
8	2-200-101	CENTER HOUSING ASSEMBLY 3.625	1
10	2-300-199M	BRUSH END HOUSING ASSEMBLY SPDCO	1
12	2-400-101	PLAIN END HOUSING ASSEMBLY	1
14	144-049	BEARING	1
16	880-003	SEAL	1
18	800-006	SEAL W/SHIELD	1
20	188-036	BRUSH ASSEMBLY	2
22	725-050	TUBE - BRUSH RETENTION	1
24	738-036	BRUSH PLATE WITH HOLDER	1
26	975-040	SPRING TORSION	2
28	337-036	GASKET	1
30	701-008	O-RING THRU BOLT	2
32	701-081	O-RING	1
34	830-007	#8-32 SCREW	2
36	830-042	THRU BOLT 8-32X8.96	2
38	990-067	WASHER, STEEL THRUST	1
40	990-070	WASHER, NYLATRON	2
42	2032068	COMPOSITE TUBE	1
44	2091160	PROPELLER	1
46	2151726	WASHER, 5/16 SS	1
48	2053101	NUT, PROP NYLOC	1
50	2092600	PIN, DRIVE	1
52	2263511	BOLT 3/8-16 X 4/25"	1
54	2263114	NUT - NYLOCK JAM 3/8-16	1
56	2261892	HINGE BASE, FW	1

▲ Not shown on Parts Diagram.

\* This part is included in an assembly and cannot be ordered individually.

## PARTS DIAGRAM & PARTS LIST



Item	Part #	Description	Quantity
58	2261897	HINGE DOOR, FW	1
60	2261537	HINGE SLEEVE	2
62	2260905	HANDLE - SOFT GRIP, L&D	1
64	2261728	WASHER - RETAINING 3/8"	1
66	2053415	SCREW - #8-32 X 3/8" TRI	2
68	2261732	WASHER #8, NYLON	2
70	2264703	INSERT - THREADED	1
72	2033400	SCREW - 10-24 X 1-3/4	1
74	2013110	NUT - 10-24 HEX (ZCP)	1
76	2011365	SCREW - COLLAR/NEW KNOB	1
78	2031520	COLLAR - DEPTH W/O INSERT	1
80	2992521	LEADWIRE - 10 GA RINGS	1
82	2263462	SCREW - 1/4-20X2 SS	6
84	2261713	WASHER - 1/4 FLAT 18-18	6
86	2263103	NUT - 1/4-20 NYLOC-JAM	6
88	2265785	DECAL, COVER EDGE 55/HC	1
90	2060298	COVER, CONTROL BOX, TRAXXIS FW	1
92	2064028	SWITCH 5 SPEED	1
94	2062505	CONTROL BOX, 5 SPD, FW	1
96	2062905	STRAIN RELIEF	1
98	2303412	SCREW, #6 X 5/8 SS	6
100	2990451	GRIP/HANDLE ASSY, 5SPD	1
102	2060015	BEARING, HANDLE	2
104	2063405	SCREW, #6 PFH SS	1
106	2994091	YOKE / SPIDER ASSY, 5SPD	1
108	2302742	SPRING, DETENT, OFF	1
110	2060005	BEARING, HANDLE PIVOT	2
112	2060900	HANDLE PIVOT, TOP	1
114	2302745	SPRING, RELEASE BUTTON	1
116	2063700	BUTTON, RELEASE	1
118	2060905	HANDLE PIVOT, BOTTOM	1
120	2303412	SCREW, #6 X 5/8 SS	6
122	2062715	SPRING, HANDLE PIVOT	1
124	2265765	DECAL - MINN KOTA, PONTOON, MTR	2
126	640-006	LEADWIRE BLK 10 AWG 61 3/4 GPT	1
128	640-115	LEADWIRE RED 10 AWG 63 3/4 GPT	1
130	2261915	LEFT BRACKET	1
132	2261916	RIGHT BRACKET	1

▲ Not shown on Parts Diagram.

\* This part is included in an assembly and cannot be ordered individually.



# PARTS DIAGRAM & PARTS LIST



Item	Part #	Description	Quantity
134	2261727	BRACKET SPACER	2
▲	2186300	TIE WRAP, 11.5" TEMP -40 TO 180	1
▲	2015800	HANG TAG CAUTION TILT HINGE	1
▲	2187107	MANUAL, PONTOON/HC	1
▲	2184926	PARTS LIST EDGE PONTOON 55/HC	1

▲ Not shown on Parts Diagram.

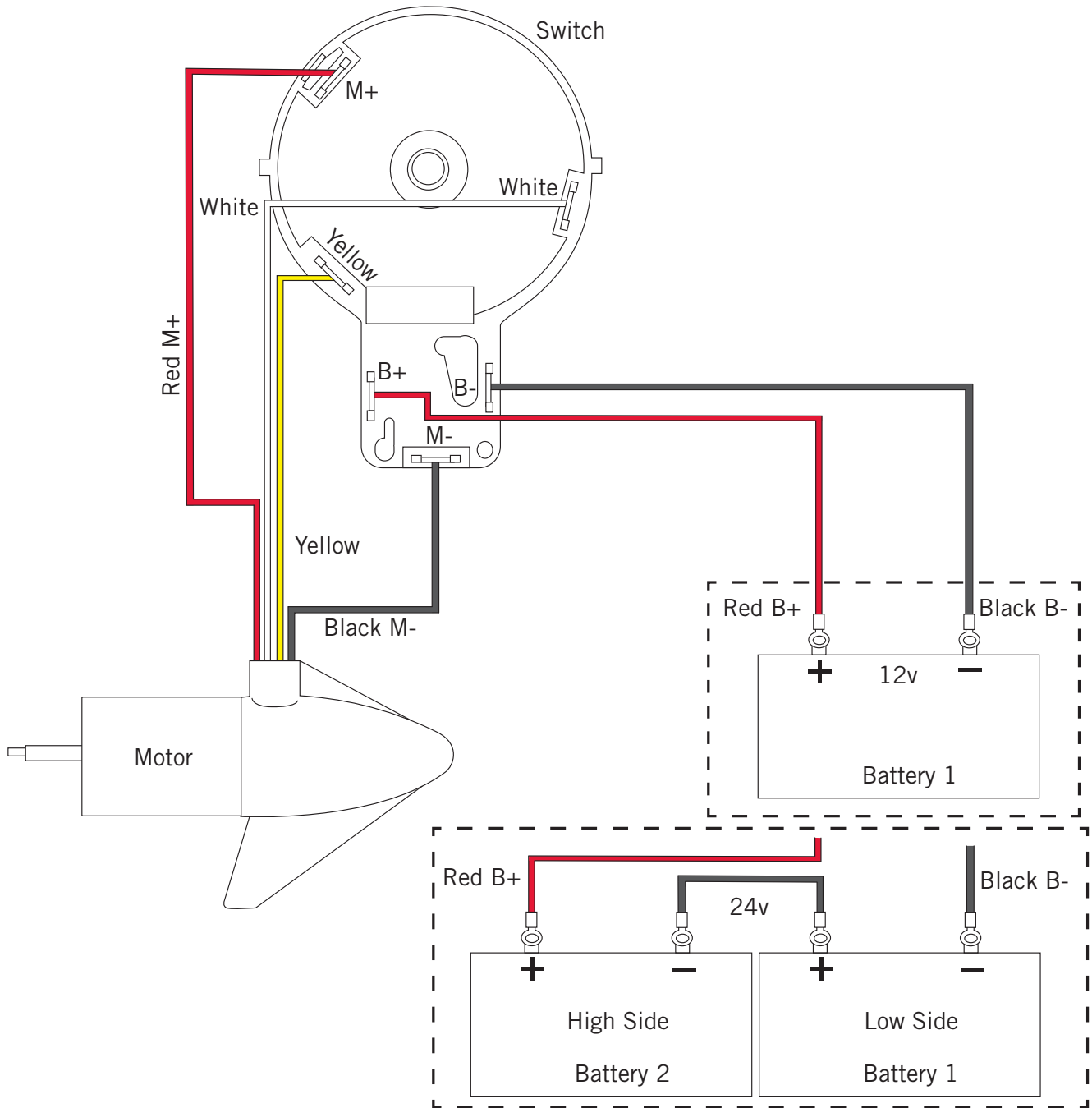
✘ This part is included in an assembly and cannot be ordered individually.



# MOTOR WIRING DIAGRAM

## PONTOON HAND CONTROL

The following Motor Wiring Diagram applies to all Pontoon Hand Control models.



**NOTICE:** This is a multi-voltage diagram. Double-check your motor's voltage for proper connections. Over-Current Protection Devices are not shown in this illustration.