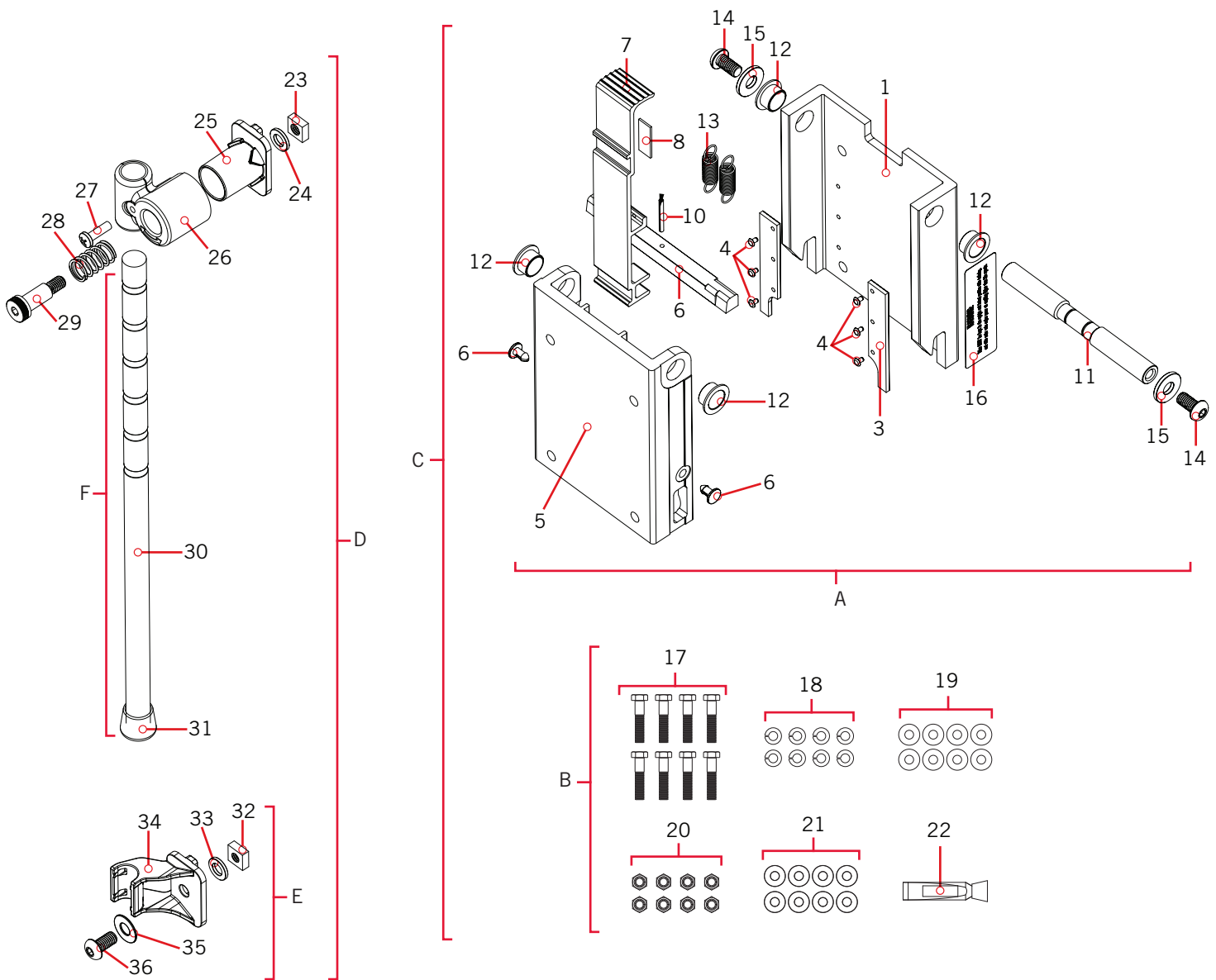


PARTS DIAGRAM & PARTS LIST

TALON TILT BRACKET

This page provides Minn Kota® WEEE compliance disassembly instructions. For more information about where you should dispose of your waste equipment for recycling and recovery and/or your European Union member state requirements, please contact your dealer or distributor from which your product was purchased. Tools required, but not limited to: flat head screw driver, Phillips screw driver, socket set, pliers, wire cutters.

› Talon Tilt Bracket Parts Diagram



PARTS DIAGRAM & PARTS LIST

▶ Talon Tilt Bracket Parts List

Assembly	Part #	Description	Qty.
A	✘	TALON TILT BRACKET	1
B	2994910	BAG ASSY, TALON TILT BRACKET	1
C	2770237	TALON TILT BRACKET & BAG ASSY	1
D	2992345	DECK SUPPORT PIVOT & LEG W/ TIP SUPPORT	1
E	✘	CRUTCH/PIVOT ASM, TILT BRACKET	1
F	2992341	CRUTCH, TILT BRACKET ASSEMBLY	1
Item	Part #	Description	Qty
1	2371941	BASE-TILT, MACHINED	1
2	2375119	PAD-WEAR, LEFT,TALON TILT BRKT	1
3	2375114	PAD-WEAR,RIGHT,TALON TILT BRKT	1
4	2378601	RIVET-POP, 1/8", 316 SS	6
5	2370237	COVER-TILT, MACHINED	1
6	2376730	PLUG-SPACER,TALON TILT BRK	2
7	2377218	LEVER-TILT, MACHINED	1
8	2375417	INSULATOR, TILT BRACKET	1
9	2372671	PIN-LATCH, TILT BRACKET	1
10	2372654	PIN-SPRING 1/8"X 1 1/4" SS	1
11	2372667	PIN-PIVET, 2-GROOVE, SS	1
12	2370007	BEARING-SLEEVE, .625 X .375	4
13	2372744	SPRING, LATCH, TILT BRACKET	2
14	2383443	SCREW-3/8-16 BHCS, SS	2
15	2371759	WASHER-3/8 HD FENDER SS	2
16	2375769	LABEL-WARNING,TILT BRACKET	1
17	2373521	BOLT-5/16-18 X 1 1/2" HHCS SS	8
18	2371756	WASHER-LOCK, 5/16"	8
19	2261722	WASHER-FLAT 5/16 S/S	8
20	2223100	NUT-5/16-18 NYLOCK S/S	8
21	2371746	WASHER .750 X .3125 SS	8
22	2378608	ANTI SEIZE TUBE, 4CC, TALON	1
23	2373131	NUT-SQUARE 3/8-18 SS	1
24	2371758	WASHER-3/8 HD FLAT SS	1
25	2372355	CRUTCH, INNER PIVOT (2992345)	1
26	2372346	CRUTCH, OUTER PIVOT, MACH	1
27	2073408	SCREW-1/4-20 X 7/8 PPH S/S	1
28	2372747	SPRING, TALON STABILIZER	1
29	2373531	BOLT-SHOULDER,TALON STABILIZER	1

✘ This part is included in an assembly and cannot be ordered individually.

▲ Not shown on Parts Diagram.

PARTS DIAGRAM & PARTS LIST



Item	Part #	Description	Qty
30	✘	CRUTCH, TILT BRACKET ASSEMBLY	1
31	2265100	BUMPER	1
32	2371758	WASHER-3/8 HD FLAT SS	1
33	2373131	NUT-SQUARE 3/8-18 SS	1
34	2372360	CRUTCH,SUPPORT,INJ.MOLDED(N/A)	1
35	2091701	WASHER-PROP (LARGE) MAX101	1
36	2383443	SCREW-3/8-16 BHCS, SS	4
▲	2374976	INSTR.SHEET,TILT BRKT 8'10'12'	1

✘ This part is included in an assembly and cannot be ordered individually.

▲ Not shown on Parts Diagram.

