

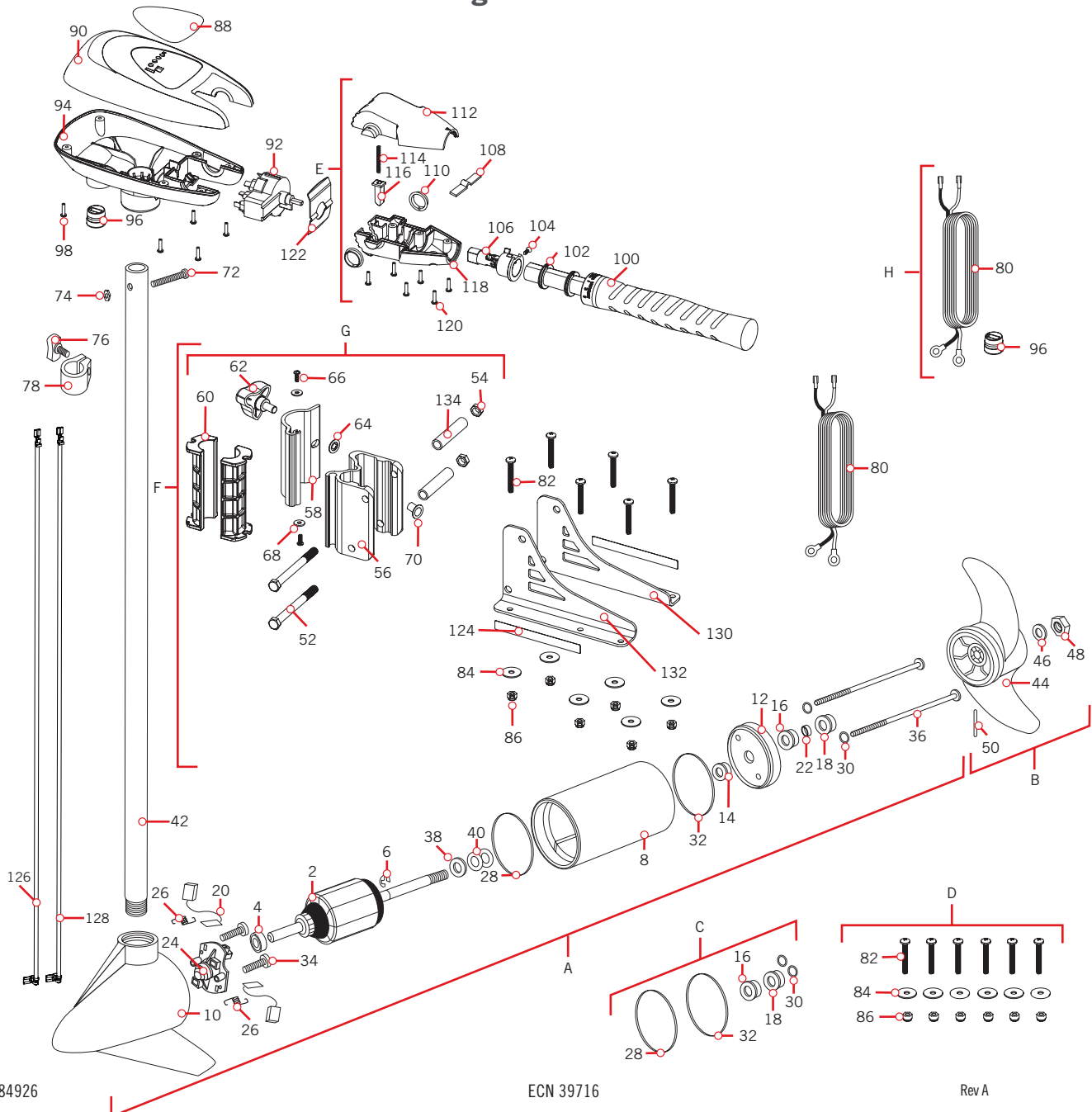
PARTS DIAGRAM & PARTS LIST

PONTOON HAND CONTROL - 55 LBS THRUST - 12 VOLT - 52" SHAFT

The parts diagram and parts list provides Minn Kota® WEEE compliance disassembly instructions. For more information about where you should dispose of your waste equipment for recycling and recovery and/or your European Union member state requirements, please contact your dealer or distributor from which your product was purchased. Tools required, but not limited to: flat head screwdriver, Phillips screwdriver, socket set, pliers, wire cutters.

PONTOON HAND CONTROL 55 >

> Pontoon Hand Control 55 Parts Diagram



Part #2184926

ECN 39716

Rev A

02/19

PARTS DIAGRAM & PARTS LIST

▶ Pontoon Hand Control 55 Parts List

Assembly	Part #	Description	Quantity
A	2097077	MOTOR ASSEMBLY 12V FW 3.625 5SPCO *55LB*	1
B	1378131	PROPELLER KIT 3.625 *55LB*	1
C	2888460	SEAL & O-RING KIT 3.625 *55LB*	1
D	2994838	BAG ASSEMBLY - BOLTS NUTS WASHERS	1
E	2990467	HANDLE ASM, 5-3 SPD FW/SW	1
F	2991645	PONTOON BRACKET	1
G	2991829	HINGE DOOR KNOB ASSEMBLY	1
H	2992527	LEADWIRE ASSEMBLY EDGE /HC	1
Item	Part #	Description	Quantity
2	2-100-117	ARM ASSEMBLY 12V 3.625 55#	1
4	140-010	BALL BEARING	1
6	788-015	RETAINING RING	1
8	2-200-101	CENTER HOUSING ASSEMBLY 3.625	1
10	2-300-199M	BRUSH END HOUSING ASSEMBLY SPDCO	1
12	2-400-101	PLAIN END HOUSING ASSEMBLY	1
14	144-049	BEARING	1
16	880-003	SEAL	1
18	800-006	SEAL W/SHIELD	1
20	188-036	BRUSH ASSEMBLY	2
22	725-050	TUBE - BRUSH RETENTION	1
24	738-036	BRUSH PLATE WITH HOLDER	1
26	975-040	SPRING TORSION	2
28	337-036	GASKET	1
30	701-008	O-RING THRU BOLT	2
32	701-081	O-RING	1
34	830-007	#8-32 SCREW	2
36	830-042	THRU BOLT 8-32X8.96	2
38	990-067	WASHER, STEEL THRUST	1
40	990-070	WASHER, NYLATRON	2
42	2032068	COMPOSITE TUBE	1
44	2091160	PROPELLER	1
46	2151726	WASHER, 5/16 SS	1
48	2053101	NUT, PROP NYLOC	1
50	2092600	PIN, DRIVE	1
52	2263511	BOLT 3/8-16 X 4/25"	1
54	2263114	NUT - NYLOCK JAM 3/8-16	1
56	2261892	HINGE BASE, FW	1

▲ Not shown on Parts Diagram.

* This part is included in an assembly and cannot be ordered individually.

PARTS DIAGRAM & PARTS LIST



Item	Part #	Description	Quantity
58	2261897	HINGE DOOR, FW	1
60	2261537	HINGE SLEEVE	2
62	2260905	HANDLE - SOFT GRIP, L&D	1
64	2261728	WASHER - RETAINING 3/8"	1
66	2053415	SCREW - #8-32 X 3/8" TRI	2
68	2261732	WASHER #8, NYLON	2
70	2264703	INSERT - THREADED	1
72	2033400	SCREW - 10-24 X 1-3/4	1
74	2013110	NUT - 10-24 HEX (ZCP)	1
76	2011365	SCREW - COLLAR/NEW KNOB	1
78	2031520	COLLAR - DEPTH W/O INSERT	1
80	2992521	LEADWIRE - 10 GA RINGS	1
82	2263462	SCREW - 1/4-20X2 SS	6
84	2261713	WASHER - 1/4 FLAT 18-18	6
86	2263103	NUT - 1/4-20 NYLOC-JAM	6
88	2265785	DECAL, COVER EDGE 55/HC	1
90	2060298	COVER, CONTROL BOX, TRAXXIS FW	1
92	2064028	SWITCH 5 SPEED	1
94	2062505	CONTROL BOX, 5 SPD, FW	1
96	2062905	STRAIN RELIEF	1
98	2303412	SCREW, #6 X 5/8 SS	6
100	2990451	GRIP/HANDLE ASSY, 5SPD	1
102	2060015	BEARING, HANDLE	2
104	2063405	SCREW, #6 PFH SS	1
106	2994091	YOKE / SPIDER ASSY, 5SPD	1
108	2302742	SPRING, DETENT, OFF	1
110	2060005	BEARING, HANDLE PIVOT	2
112	2060900	HANDLE PIVOT, TOP	1
114	2302745	SPRING, RELEASE BUTTON	1
116	2063700	BUTTON, RELEASE	1
118	2060905	HANDLE PIVOT, BOTTOM	1
120	2303412	SCREW, #6 X 5/8 SS	6
122	2062715	SPRING, HANDLE PIVOT	1
124	2265765	DECAL - MINN KOTA, PONTOON, MTR	2
126	640-006	LEADWIRE BLK 10 AWG 61 3/4 GPT	1
128	640-115	LEADWIRE RED 10 AWG 63 3/4 GPT	1
130	2261915	LEFT BRACKET	1
132	2261916	RIGHT BRACKET	1

▲ Not shown on Parts Diagram.

* This part is included in an assembly and cannot be ordered individually.



PARTS DIAGRAM & PARTS LIST



Item	Part #	Description	Quantity
134	2261727	BRACKET SPACER	2
▲	2186300	TIE WRAP, 11.5" TEMP -40 TO 180	1
▲	2015800	HANG TAG CAUTION TILT HINGE	1
▲	2187107	MANUAL, PONTOON/HC	1
▲	2184926	PARTS LIST EDGE PONTOON 55/HC	1

▲ Not shown on Parts Diagram.

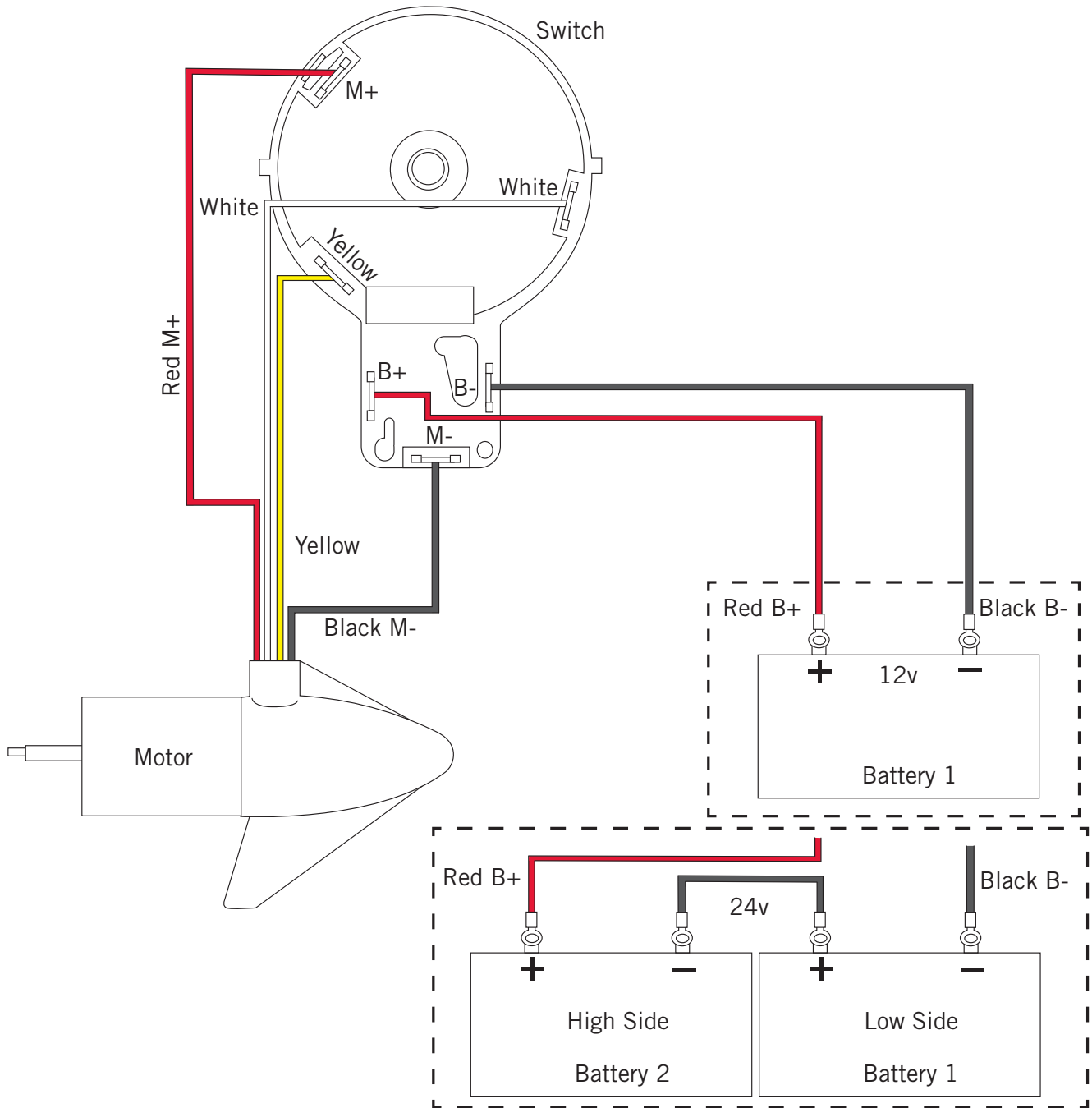
✘ This part is included in an assembly and cannot be ordered individually.



MOTOR WIRING DIAGRAM

PONTOON HAND CONTROL

The following Motor Wiring Diagram applies to all Pontoon Hand Control models.



NOTICE: This is a multi-voltage diagram. Double-check your motor's voltage for proper connections. Over-Current Protection Devices are not shown in this illustration.