

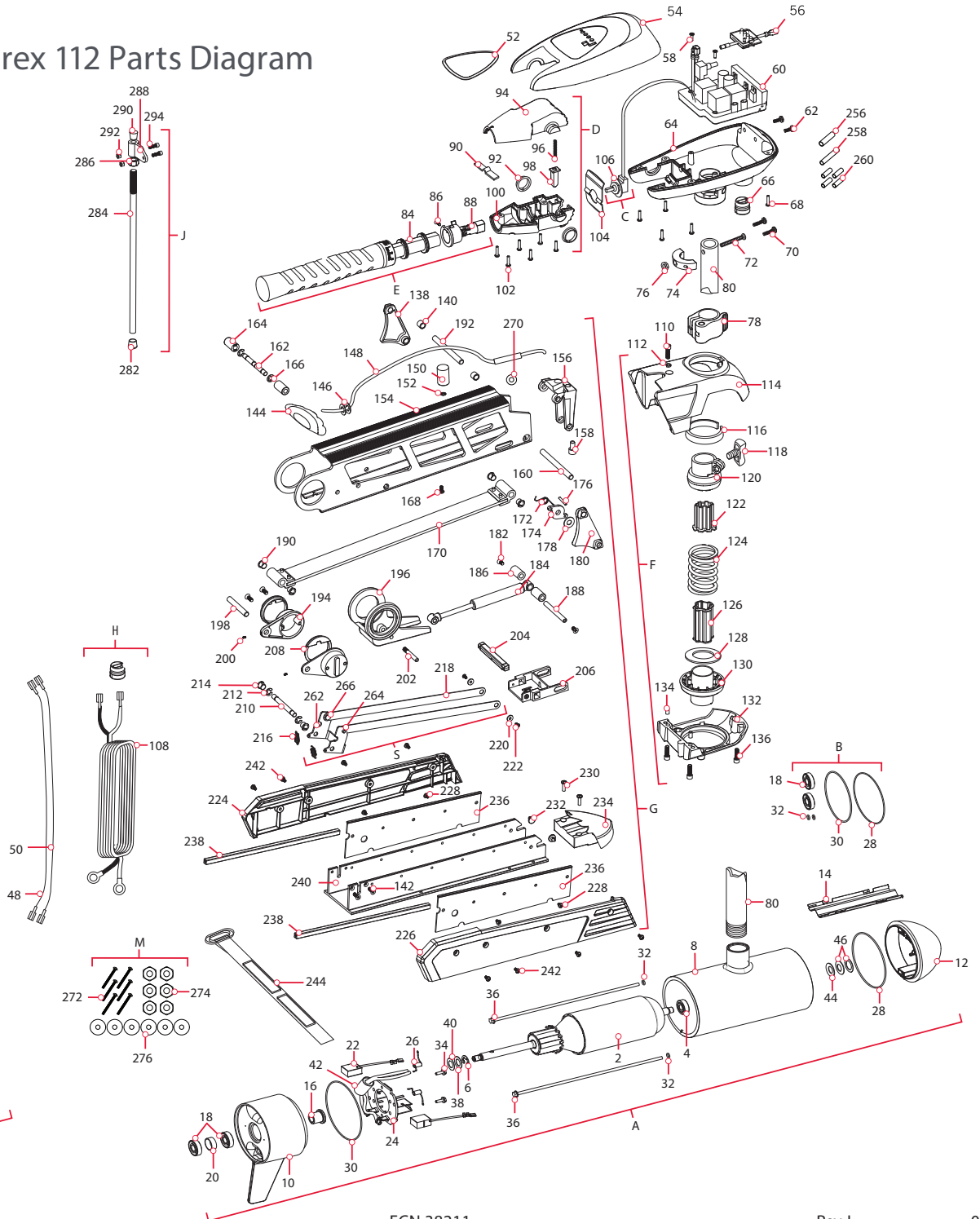
PARTS DIAGRAM & PARTS LIST

RIPTIDE FORTREX 112
112 LBS THRUST
36 VOLT - 52 AMP
62" SHAFT

From 2284914rj

Deleted "H" from diagram and list

▶ Riptide Fortrex 112 Parts Diagram



PARTS DIAGRAM & PARTS LIST

Added p/n to Item G, 114, 132
 Corrected 108, 54 and 52 p/n
 Completely Removed H, 82
 Created New H, Leadwire Kit

› Riptide Fortrex 112 Parts List

Assembly	Part #	Description	Quantity
A	2317092	36V MOTOR 62" SW	1
B	2881450	SEAL AND O-RING KIT	1
C	2068411	POTENTIOMETER REPLACEMENT KIT	1
D	2990468	HANDLE ASSY, VARS	1
E	2990466	GRIP ASSY, VARS	1
F	2991757	BOWGUARD ASSY SW	1
G	2991657	MNT ASM FORTREX SW 112# 62"	1
H	2992521	LEADWIR ASSY-HC BOW VAR 96	1
J	2991925	BRACKET STABILIZER ASSEMBLY	1
K	1378160	PROPELLER KIT WW2	1
M	2994887	BAG ASSEMBLY	1
S	2773601	LATCH STRAP, LONG MNT SS	2
Item	Part #	Description	Quantity
2	2-100-245	ARMATURE ASSEMBLY	1
4	140-014	BEARING	1
6	788-040	RETAINING RING	1
8	2-200-341	CENTER HOUSING ASSEMBLY	1
10	2-300-156	BRUSH END HSG ASY 4.5" SW	1
12	421-241	PLAIN END HOUSING ASSY. STD	1
14	582-016	RETAINING CLIP	1
16	144-017	FLANGE BEARING	1
18	880-025	SEAL	2
20	725-095	PAPER TUBE - SEAL BORE	1
22	188-095	BRUSH	2
24	9-738-011	BRUSH PLATE ASSEMBLY	1
26	975-045	BRUSH SPRING	2
28	701-098	O-RING, PLAIN END HOUSING	1
30	701-103	O-RING, 103 MM X 3.00 MM, BUNA	1
32	701-009	O-RING, THRU-BOLT	2
34	2053410	SCREW-BRUSH PLATE	2
36	830-094	THRU-BOLT	2
38	990-051	WASHER, STEEL	1
40	990-052	WASHER, NYLATRON	1
42	2307312	FERRITE BEAD	1
44	990-011	WASHER, SHIM	1
46	992-011	WASHER, BELLEVILLE	2
48	640-045	LEADWIRE, BLACK 62"	1
50	640-145	LEADWIRE, RED 62"	1
52	2195668	DECAL, C-BOX COVER 112#	1
54	2060299	C-BOX COVER	1
56	2074082	BATTERY METER, 36V SW	1

Item	Part #	Description	Quantity
58	2043427	SCREW, #8 X 7/8 SS	2
60	2184027	CONTROL BOARD, 24/36V	1
62	2303434	SCREW, #8-30 X 5/8 SS	2
64	2062538	CONTROL BOX, CAST, SW	1
66	2062905	STRAIN RELIEF	1
68	2303412	SCREW, #6 X 5/8 SS	6
70	2063410	SCREW, #10-32 X 3/4" CAP SS	2
72	2093400	SCREW, #10-24 X 1-7/8" PPH SS	1
74	2061529	COLLAR-CTRL BOX (SW)	1
76	2333101	NUT, 10-24, NYLOCK, SS	1
78	2991521	CAM LOCK/DEPTH COLLAR ASSY	1
80	2002015	TUBE COMPOSITE 62"	1
			1
84	2060015	BEARING, HANDLE	2
86	2063405	SCREW, #6 PFH SS	2
88	2994092	YOKE / SPIDER ASSY, VARS	1
90	2302742	SPRING, DETENT, OFF	1
92	2060005	BEARING, HANDLE PIVOT	2
94	2060900	HANDLE PIVOT, TOP	1
96	2302745	SPRING, RELEASE BUTTON	1
98	2063700	BUTTON, RELEASE	1
100	2060905	HANDLE PIVOT, BOTTOM	1
102	2303412	SCREW, #6 X 5/8 SS	6
104	2062715	SPRING, HANDLE PIVOT	1
106	2061700	WASHER, POT HOLDER	1
108	2090650	LEADWIRE ASSY	1
110	2283414	SCREW, 5/16-18 SHCS, RIE	1
112	2281700	WASHER, 5/16 HIGHCOLLAR LOCK	1
114	2281953	BOWGUARD TOP	1
116	2280001	BEARING, BOWGUARD TOP	1
118	2011366	KNOB, SS	1
120	2261525	SPRING SLEEVE, UPPER	1
122	2264702	TUBE INSERT, UPPER	1
124	2262705	SPRING, BOWGUARD	1
126	2282000	TUBE INSERT, LOWER	1
128	2281525	SPACER, LOWER SPRING	1
130	2281520	SPRING SLEEVE, LOWER	1
132	2991729	BOWGUARD BOTTOM	1
134	2282612	PIN-SPRING, 5/16", SS	2
136	2283413	SCREW, 3/8-16 SHCS, RIE	3
138	2280800	LINK, BOWGUARD MOUNT, LEFT	1

✱ This part is included in an assembly and cannot be ordered individually.

▲ Not shown on Parts Diagram.

PARTS DIAGRAM & PARTS LIST

Item	Part #	Description	Quantity
140	2287303	BUSHING, UPPER PINS	2
142	2283411	SCREW, 1/4-20 X 1" FHS RIE TORX	4
144	2880401	PULL GRIP ASSEMBLY	1
146	2261732	WASHER	2
148	2771601	ROPE ASSEMBLY	1
150	2281516	SPACER, INNER ARM	1
152	2281702	WASHER, LOCK 1/4	1
154	2284212	OUTER ARM, LONG, 62"	1
156	2992322	ROPE GUIDE ASSEMBLY	1
158	2281530	INSERT, THREADED	1
160	2282608	PIN, 7/16 X 5 5/32	1
162	2282602	PIN, 3/8 X 3 3/4	1
164	2261505	SPACER	2
166	2263011	E-RING, 3/8 SHAFT	2
168	2223418	SCREW, 1/4-20 X 1/2 BHCS	1
170	2993821	INNER ARM ASSEMBLY, LONG, 62"	1
172	2042711	SPRING, TORSION	1
174	2283620	LATCH, SAFETY	1
176	2282611	SPRING, SAFETY LATCH	1
178	2281704	WASHER 7/16 NYLON	1
180	2280805	LINK, BOWGUARD MOUNT, RIGHT	1
182	2283410	SCREW 1/4-20 X 1/2 PFH	2
184	2288405	GAS SPRING, 112#, LONG	1
186	2281710	SPACER, GAS SPRING	2
188	2282610	PIN, UPPER, SHOCK	1
190	2280005	BEARING, NYLINER 7/16"	4
192	2282600	PIN, 7/16 X 4 7/8	1
194	2281932	BRACKET, REAR PIVOT	2
196	2281501	YOKE, SHOCK MOUNT	1
198	2282606	PIN, 7/16 X 4 1/2	1
200	2283402	SCREW, SET, 6-32 X 1/4	2
202	2282604	PIN, KNURLED 5/16 X 2	1
204	2283615	LATCH BAR	1
206	2283610	BRACKET - LATCH/STRAP, ROPE PULL	1
208	2287300	BUSHING, REAR PIVOT	2
210	2282602	PIN, 3/8 X 3 3/4	1
212	2263011	E-RING, 3/8 SHAFT	2
214	2280008	BEARING, IGLIDE	2
216	2282720	SPRING, EXTENSION	2
218	✱	LATCH STRAP ASSEMBLY, LONG	1
220	2261732	WASHER 8, NYLON	2
222	2373450	SCREW 8-18 X 3/8	2
224	2283948	SIDEPLATE, LEFT, LONG, SW	1

Item	Part #	Description	Quantity
226	2283943	SIDEPLATE, RIGHT, LONG, SW	1
228	2323403	SCREW-1/4-20 X .375 MCH SS CRPH	4
230	2073408	SCREW 1/4-20 X 7/8	2
232	2286700	PLUG, SPACER	2
234	2283900	RAMP, MOTOR	1
236	2283631	RAIL, MACH., MOTOR REST	2
238	2286400	COVER, RAIL, MOTOR REST (SUB)	2
240	2281913	BASE EXTRUSION, LONG, MACH	1
242	2323405	SCREW 1/4-20 X 1/2	8
244	2263806	STRAP HOLD DOWN	1
246	2341160	PROPELLER WW2	1
248	2262658	DRIVE PIN, LARGE 1" X 3/16" SS	1
250	2091701	WASHER, PROP, LARGE	1
252	2198401	NUT, NYLOCK, PROP, ANODE	1
254	2093101	NUT-PROP, NYLOC, LG 31855	1
256	2305415	SHRINK TUBE .412 X 2.25"	1
258	2305410	SHRINK TUBE .315 X 2.25"	1
260	2305403	SHRINK TUBE .500 X 1.0"	4
262	✱	BRACKET LATCH	1
264	✱	RIVET, SHLDR 5/16" X .159 SS	2
266	✱	BEARING, NYLINER 5/16"	2
270	2151700	WASHER-EYE SHAFT SS	1
272	2263468	SCREW-1/4-20 X 2.5" S/S PPH	6
274	2263103	NUT-1/4-20 NYLOCK SS	6
276	2261713	WASHER-1/4 FLAT 18-8 SS	6
278	2287101 ▲	MANUAL, RT FORTREX (RT/SF)	1
280	2284914 ▲	PARTS LIST, RT 112/SF 62"	1
282	2265100	BUMPER (CRUTCH TIP)	1
284	2263624	ANODIZED ALUMINUM 3/4" ROD, 22"	1
286	2263107	HEX NUT 3/4-10 NYLON	1
288	2281929	STABILIZER ARM BRACKET	1
290	2260221	VINYL CAP	1
292	2223100	NYLOCK STAINLESS STEEL NUT	2
294	2263422	SCREW - 5/16-18 X 1"	2

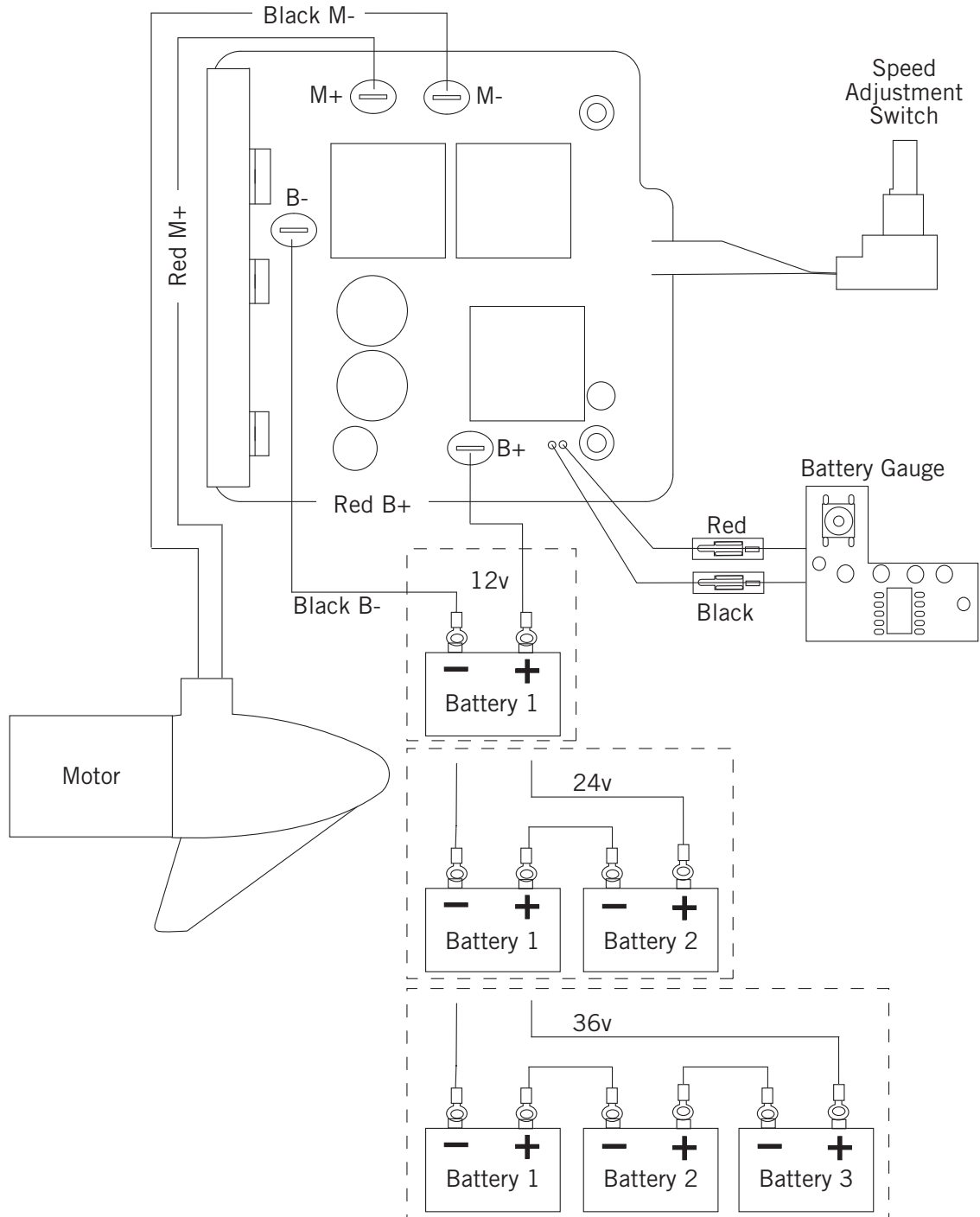
✱ This part is included in an assembly and cannot be ordered individually.

▲ Not shown on Parts Diagram.

MOTOR WIRING DIAGRAM

RIPTIDE FORTREX

The following Motor Wiring Diagram applies to all Riptide Fortrex Hand Control models.



NOTICE: This is a multi-voltage diagram. Double-check your motor's voltage for proper connections. Over-Current Protection Devices are not shown in this illustration.