

# PARTS DIAGRAM & PARTS LIST

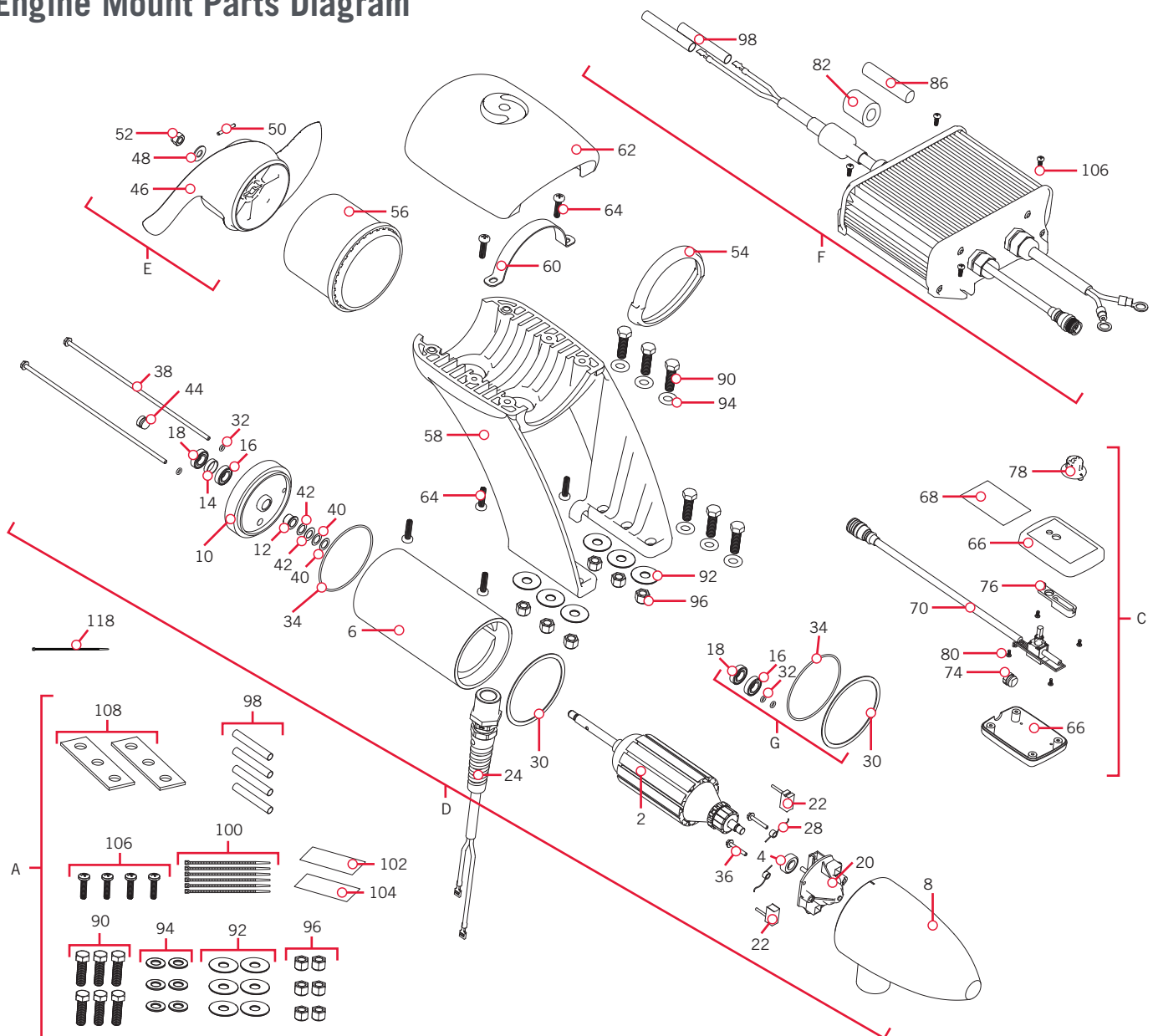
## ENGINE MOUNT

12 VOLT

The parts diagram and parts list provides Minn Kota® WEEE compliance disassembly instructions. For more information about where you should dispose of your waste equipment for recycling and recovery and/or your European Union member state requirements, please contact your dealer or distributor from which your product was purchased. Tools required, but not limited to: flat head screwdriver, Phillips screwdriver, socket set, pliers, wire cutters.

### ENGINE MOUNT MOTOR >

### > Engine Mount Parts Diagram



# PARTS DIAGRAM & PARTS LIST

## » Engine Mount Parts List

Assembly	Part #	Description	Quantity
A	2994856	BAG ASSY, EM	1
C	2990239	HAND CONTROLLER ASSY, EM	1
D	2387103	MTR ASY 12V 3.625 55# SW "EM"	1
E	1378170	PROP KIT PWR PRP	1
F	2990246	CTRL MOD ASY 12V, SINGLE	1
G	2888460	SEAL & O-RING KIT TURBO PRO *3.625*	1
Item	Part #	Description	Quantity
2	2-100-207	ARM ASY 12V 3.62 55#EM/LS	1
4	140-010	BEARING - BALL	1
6	2-200-301A	CTR HSG ASY 3.62 SW/TX-MGNTZ	1
8	421-302	BRSH END HSG 3.62 SW "EM"	1
10	2-400-338	PLAIN END HSG 3.625 "EM"	1
12	144-049	BEARING - FLANGE	1
14	725-035	PAPER TUBE - SEAL BORE	1
16	880-003	SEAL	1
18	880-006	SEAL WITH SHIELD	1
20	2-600-168	BRUSH PLATE ASSEMBLY- 3.625 EM	1
22	188-036	BRUSH ASSEMBLY 3.625	2
24	640-233	LEADWIRE ASSEMBLY 10 AWG	1
28	975-040	SPRING - TORSION	2
30	337-036	GASKET	1
32	701-008	O-RING	2
34	701-081	O-RING	1
36	830-007	SCREW, # 8-32	2
38	830-042	THRU BOLT 10-32 X 8.83	2
40	990-067	WASHER - STEEL THRUST	2
42	990-070	WASHER - NYLATRON	2
44	836-001	PLUG ALUMINUM 1/8 X 27 NPT	1
46	2091170	PROP-PWR (3 5/8") REAMED	1
48	2151726	WASHER-5/16 STD (S/S)	1
50	2092600	PIN-DRIVE 1.06" LG (SS)	1
52	2198400	ANODES, ZINC, 3.25/3.62" LWR UNT	1
54	2381530	ADAPTER RING, FRONT	1
56	2381535	ADAPTER RING, REAR	1
58	2381940	BRACKET, LOWER MOUNT	1
60	2383810	STRAP, EM	1
62	2380215	CAP-TOP (EM) SW	1

\* This part is included in an assembly and cannot be ordered individually.

▲ Not shown on Parts Diagram.

# PARTS DIAGRAM & PARTS LIST



Item	Part #	Description	Quantity
64	2383418	SCREW-1/4-10 X 1" PPH SS PLST	6
66	✖	ENCLOSURE,HAND CONTROL,EM	1
68	✖	DECAL-HAND CONTROL, EM	1
70	✖	CABLE/POT ASSY, EM	1
74	✖	DETENT,EM	1
76	✖	HOUSING-DETENT,EM	1
78	✖	KNOB,EM HAND CONTROL ASSY	1
80	✖	SCREW-#4-24 X 3/8 HI-LO SS	4
82	2307310	BEAD-FERRITE PD/AP	1
86	2075401	SHRINK TUBING,1.5 OD(CUT)(N/A)	1
88	2385810 ▲	LABEL,12V-RED SUPPLIER	1
90	2383422	SCREW-3/8-16 X 1 1/4 HHCS SS	6
92	2381726	WASHER-FENDER 3/8 X 1 1/4" SS	6
94	2381728	WASHER-FLAT 3/8" THICK SS SAE	6
96	2383122	NUT 3/8-16 NYLON INST LOCKNUT	6
98	2375401	SHRINK TUBE, 2.00 X 3/8	4
100	2256300	TIE WRAP-5.5" BLACK	6
102	9950950	HOOK-1.5" X 2" HOOK & LOOP,BLK	1
104	9950953	LOOP-1.5" X 2" HOOK & LOOP,BLK	1
106	2373427	SCREW-BOAT-#12 X 5/8 PPH (N/A)	4
108	2385110	INSULATOR PAD, EM	2
110	2014800 ▲	BAG-ZPLCK (4X6) 4ML CLEAR	1
112	2014830 ▲	BAG-16X24 1 ML STATIC FREE PLS	1
114	2387110 ▲	MANUAL, RT/EM	1
116	2384937 ▲	PARTS LIST, RT55EM	1
118	9953310	TIE WRAP- 8.5"	1

✖ This part is included in an assembly and cannot be ordered individually.

▲ Not shown on Parts Diagram.

