

PARTS DIAGRAM & PARTS LIST

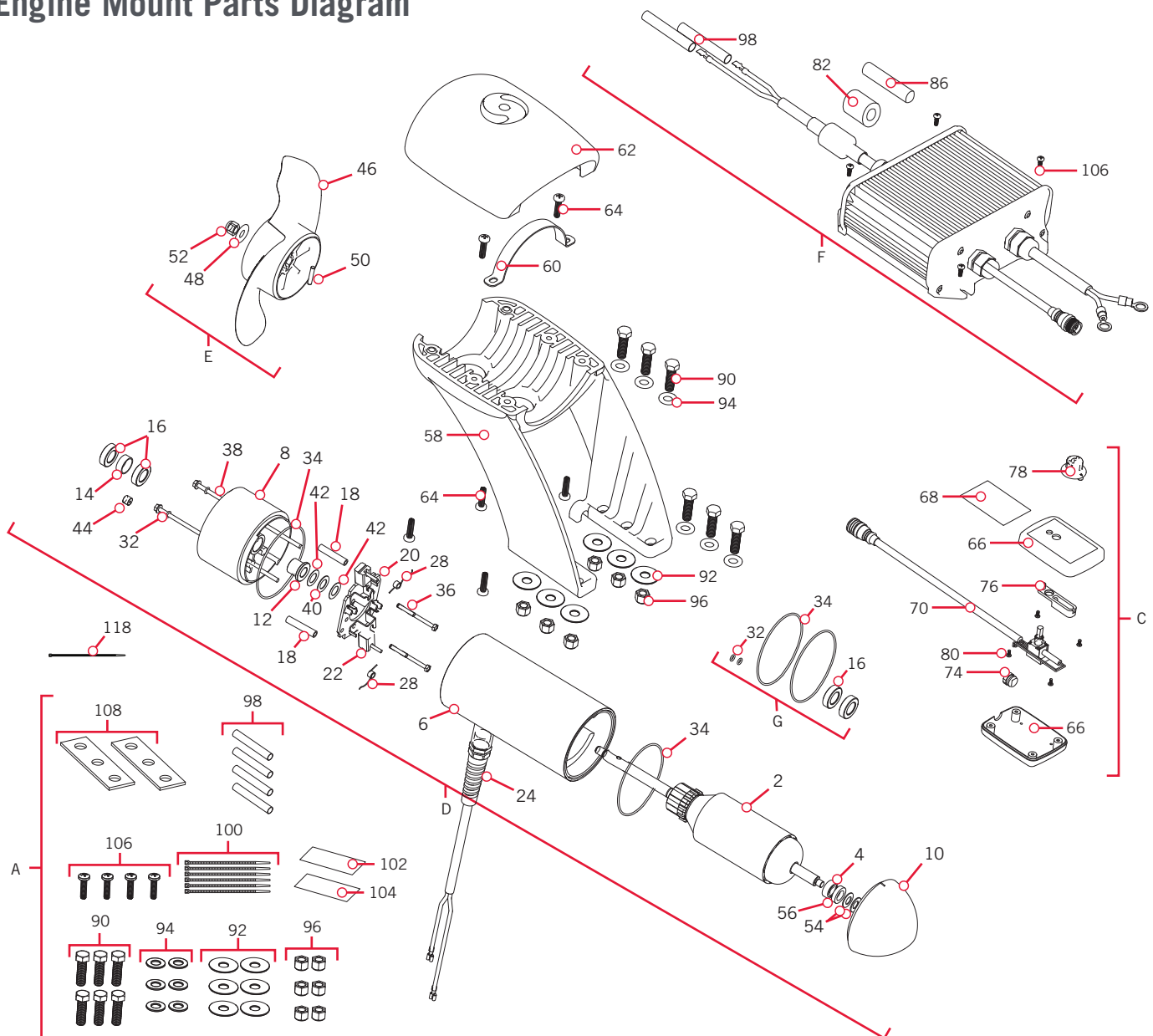
ENGINE MOUNT

36 VOLT

The parts diagram and parts list provides Minn Kota® WEEE compliance disassembly instructions. For more information about where you should dispose of your waste equipment for recycling and recovery and/or your European Union member state requirements, please contact your dealer or distributor from which your product was purchased. Tools required, but not limited to: flat head screwdriver, Phillips screwdriver, socket set, pliers, wire cutters.

ENGINE MOUNT MOTOR >

> Engine Mount Parts Diagram



» Engine Mount Parts List

Assembly	Part #	Description	Quantity
A	2994856	BAG ASSY	1
C	2990239	HAND CONTROLLER ASSY, EM	1
D	2396250	MTR ASY 36V 4" 101#	1
E	1378132	PROP KIT	1
F	2990247	CTRL MOD ASY. 24/36V, SINGLE	1
G	2889460	SEAL & O-RING KIT *4.0*	1
Item	Part #	Description	Quantity
2	2-100-235	ARM ASSY 36V 4" 101#	1
4	140-010	BEARING-BALL	1
6	2-200-109	CTR HSG ASY 4.0 "EM"	1
8	2-300-149	BRSH END HSG 4"	1
10	421-276	PLAIN END HSG 4"	1
12	144-017	BEARING - FLANGE	1
14	725-095	PAPER TUBE - SEAL BORE	1
16	880-025	SEAL	2
18	973-025	SPACER - BRUSHPLATE	2
20	2-600-234	BRUSH PLATE ASSEMBLY 4" EM	1
22	188-094	BRUSH ASSEMBLY	2
24	640-234	LEADWIRE ASSEMBLY 10 AWG	1
28	975-041	SPRING - TORSION	2
32	701-009	O-RING	2
34	701-043	O-RING	2
36	830-027	SCREW, SELF-THREAD	2
38	830-096	THRU BOLT	2
40	990-051	WASHER - STEEL THRUST	1
42	990-052	WASHER - NYLATRON	2
44	836-001	ALUMINUM PLUG	1
46	2331160	PROP-PWR (3 5/8") REAMED	1
48	2091701	WASHER-5/16 STD (S/S)	1
50	2262658	PIN-DRIVE	1
52	2093101	NUT-PROP, NYLOC	1
54	992-010	WASHER BELLEVILLE	2
56	990-045	SPACER - THRUST	1
58	2381940	BRACKET, LOWER MOUNT	1
60	2383810	STRAP, EM	1
62	2380215	CAP-TOP (EM) FW	1
64	2383418	SCREW-1/4-10 X 1" PPH SS PLST	6

* This part is included in an assembly and cannot be ordered individually.

▲ Not shown on Parts Diagram.

PARTS DIAGRAM & PARTS LIST



Item	Part #	Description	Quantity
66	✖	ENCLOSURE, HAND CONTROL, EM	1
68	✖	DECAL-HAND CONTROL, EM	1
70	✖	CABLE/POT ASSY, EM	1
74	✖	DETENT, EM	1
76	✖	HOUSING-DETENT, EM	1
78	✖	KNOB, EM HAND CONTROL ASSY	1
80	✖	SCREW-#4-24 X 3/8 HI-LO SS	4
82	2307310	BEAD-FERRITE PD/AP	1
86	2075401	SHRINK TUBING, 1.5 OD (CUT)(N/A)	1
88	2385810 ▲	LABEL,12V-RED SUPPLIER	1
90	2383422	SCREW-3/8-16 X 1 1/4 HHCS SS	6
92	2381726	WASHER-FENDER 3/8 X 1 1/4" SS	6
94	2381728	WASHER-FLAT 3/8" THICK SS SAE	6
96	2383122	NUT 3/8-16 NYLON INST LOCKNUT	6
98	2375401	SHRINK TUBE, 2.00 X 3/8	4
100	2256300	TIE WRAP-5.5" BLACK	6
102	9950950	HOOK-1.5" X 2" HOOK & LOOP,BLK	1
104	9950953	LOOP-1.5" X 2" HOOK & LOOP,BLK	1
106	2373427	SCREW-BOAT-#12 X 5/8 PPH (N/A)	4
108	2385110	INSULATOR PAD, EM	2
110	2014800 ▲	BAG-ZPLCK (4X6) 4ML CLEAR	1
112	2014830 ▲	BAG-16X24 1 ML STATIC FREE PLS	1
114	2387100 ▲	MANUAL, MK/EM	1
116	2384934 ▲	PARTS LIST, MK101EM	1
118	2384934	TIE WRAP - 8.5"	1

✖ This part is included in an assembly and cannot be ordered individually.

▲ Not shown on Parts Diagram.

